



Customization

- build swap -



CEDAR
J108i, J108a

CONTENTS

1	Emma Login & Script Execution	3
2	Customization Workflow.....	4
2.1	Customize Unit	5
2.2	Power On Unit.....	5
2.3	Activate Unit	5
2.4	Customize to Ship or Build Swap	6
2.4.1	Customize to Ship	6
2.4.2	Build Swap	6
3	Revision History	7

*For general information about Customization and Swap, refer to
1221-5655: Generic Repair Manual – build swap*



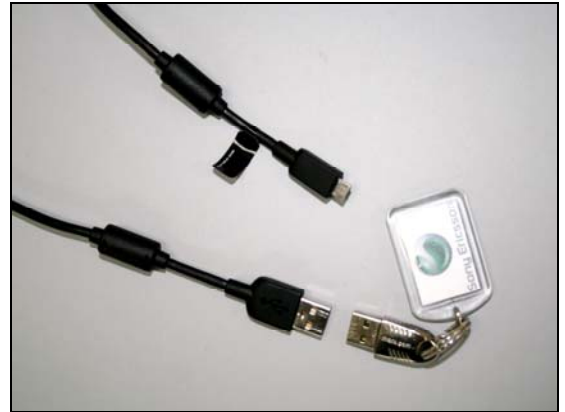
1 Emma Login & Script Execution

In order to change a phone from Customer A to Customer B you must run a 'Customization Script' followed by an 'Activation Script'.

Start by launching the Emma application.

Connect the EC700 Micro USB to USB cable to one of the computer's USB ports but do not connect the cable to the phone.

The USB Activation Dongle has to be inserted into one of the computer's USB ports and installed to be able to run an 'Activation script'.



To execute a 'Customization' or 'Activation' you need to be properly logged on to the Emma application by using your User ID and Password.

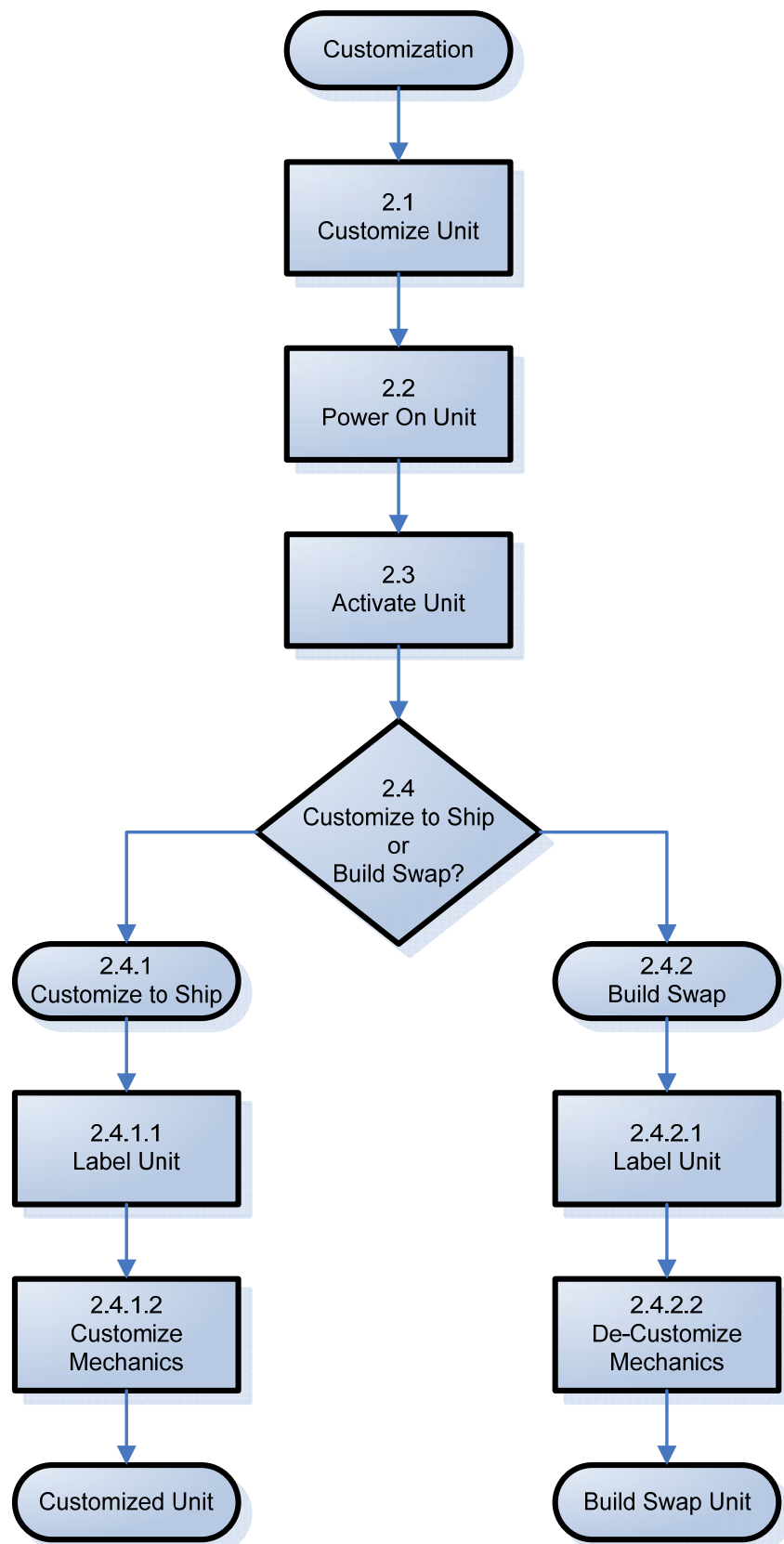
To execute a 'Customization Script' or 'Activation Script' (or any other function):

- check that the phone is powered off
- press and keep the "C" key down on the phone
- connect the phone to the USB Cable
- release the "C" key when the device appears in the Emma window

When executing an 'Activation Script' you will be prompted for the PIN of your USB Activation Dongle.



2 Customization Workflow



Customization Workflow

The primary reason for the customization process is to create a customized unit.

A customized unit is a unit that is ready to ship as a final swap unit.

The second reason for customization is to create “build swap” units and this can be done by selecting the ‘Service Exchange Unit’ customization script for the particular model.

The instruction steps below refer to the flowchart on previous page.

2.1 Customize Unit

After following the steps in section 1, ‘Emma Login & Script Execution’, you can customize a phone as follows:

- look for the Customize script for the desired operator “J108 Operator Country”
- if that script is not available locally, select ‘Server search’ for a complete list of available scripts.

When creating a ‘build swap’ unit, select “J108 Service Exchange Unit” as the customization scripts!

- choose the desired script
- the application will download all necessary software to run the script and then flash that software to the phone
- after successful update, disconnect the phone from the USB Cable

2.2 Power On Unit

Power on the phone and wait until ‘Insert SIM Card’ appears to ensure that the initialization of the phone is completed.

Power off the phone.

2.3 Activate Unit

After following the steps in section1, ‘Emma Login & Script Execution’ you can now activate a phone as follows:

- look for and select the ‘Customization Activation’ script

If the phone has already been activated, the ‘Activation’ script will still be selectable. If selected, ‘Activating not required’ will be prompted.

- after successful activation, disconnect the phone from the USB Cable
- power up the phone and confirm that it is properly activated by entering
Service Menus ⇒ Service Info ⇒ SIM Lock
and verify that the locks are unlocked



Customization Workflow

2.4 Customize to Ship or Build Swap

Is the unit a customized unit to be shipped?

Yes – proceed to 2.4.1 Customize to Ship

No – go to 2.4.2 Build Swap

2.4.1 Customize to Ship

2.4.1.1 Label Unit

Print two Core Unit labels by using 'LabelMake'.

Place one label on the phone as described in *1243-7089: J108i J108a Working Instructions – mechanical*.

Place the second label on the Exchange Unit Box.

'LabelMake' instructions to be found on CSPN under 'LabelMake'!

2.4.1.2 Customize Mechanics

If necessary, apply the proper custom mechanical parts (co-branding, keyboard, etc.) for the variant being created in accordance with the *Cross Reference List* by following the instructions of *1243-7089: J108i J108a Working Instructions – mechanical*.

2.4.2 Build Swap

2.4.2.1 Label Unit

Using a red marker, label the unit with the correct Exchange Unit number.

Refer to the *Cross Reference List* for the appropriate variant, which should be based on the non-customizable mechanics of the unit.

2.4.2.2 De-Customize Unit

Remove any co-branding as described in *1243-7089: J108i J108a Working Instructions – mechanical*.



3 Revision History

Rev.	Date	Changes / Comments
1	2010-Aug-5	Initial release